

Energizer®

AUTO SAFETY LIGHT

ENERGIZER'S AUTO SAFETY LIGHT is designed with safety, power, performance, durability, and functionality in mind. This versatile light offers hands-free usage, making it perfect for auto emergencies, repairs, or DIY projects. It features both an area light and a directional light, allowing you to work under the hood, on the engine, or on the ground to change a tire. For added convenience, the light includes a hanger hook, magnetic base, and suction cup, so you can confidently place it wherever you need. Two threaded standard tripod attachment points provide even more versatility. Plus, it has a built-in power bank with a USB port to charge your devices, ensuring you're always prepared.

AREA OR DIRECTIONAL LIGHT

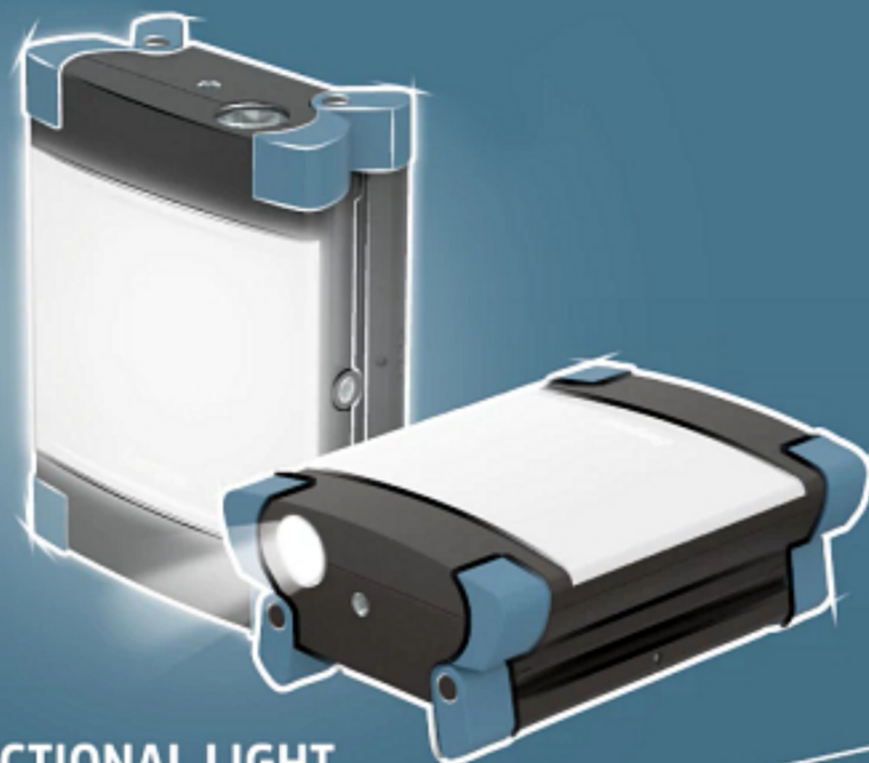
4 MODES



INCLUDES RED SAFETY STROBE

AREA LIGHT

+ DIRECTIONAL LIGHT



LOW BATTERY INDICATOR



HANGER HOOK

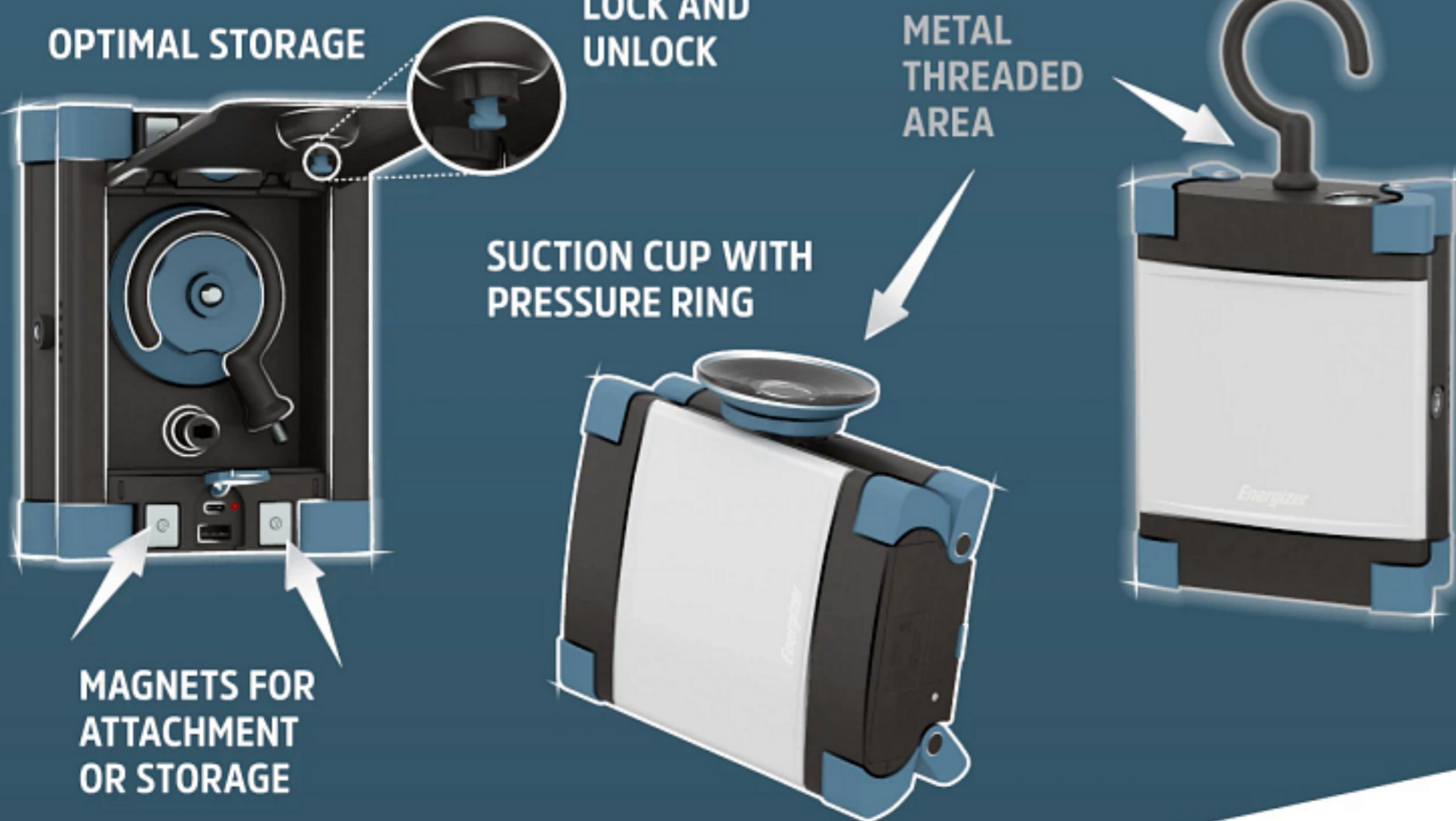
OPTIMAL STORAGE

LOCK AND UNLOCK

METAL THREADED AREA

SUCTION CUP WITH PRESSURE RING

MAGNETS FOR ATTACHMENT OR STORAGE



OPERATING INSTRUCTIONS

HOW TO USE:

FOR AREA LIGHT:

- Press one time for high.
- Press two times for medium.
- Press three times for low.
- Press and hold at any time for red flashing.

FOR DIRECTIONAL LIGHT:

- Press four times for directional light.

HOW TO CHARGE:

- Light may be used in low mode while charging (in or out) but charging time will be increased.
- For best charging performance, charge (in or out) with the light turned off.

TO CHARGE LIGHT:

- Connect the provided USB cable to the light, then plug it into any USB charging port.

TO CHARGE DEVICE:

- Connect the device's cable to the charging port, then plug in the device to start charging.

CHARGING INDICATOR

- A charging indicator light is located near charging port and will illuminate when the USB charging has started.

- Red Flashing = Charging Light
- Red = Charging Light Complete
- Green = Charging Device

LOW BATTERY INDICATOR

- Area Light will flash red when battery is low.

DESIGN FEATURES:

STORAGE AREA:

- Suction cup, hook and charging cable can be stored in the designated storage area.
- For optimal storing, place the suction cup in first (suction side down) and place hook around suction cup.
- To access storage turn knob to the left to unlock. Pull to open.
- To close storage, close door and turn knob to the right to lock.

ATTACHMENTS:

- This light features two metal threaded areas compatible with standard tripod mounts.
- Both the suction cup and hanger hook can be attached to either threaded area, offering versatile mounting options.

SUCTION CUP:

- Moisten the suction cup for better adhesion, especially on vertical surfaces.
- Place the cup on the surface, press down, and tighten the knob.
- Connect the light at a metal threaded area.
- To remove the light, first release the suction by turning the knob counterclockwise.
- Use the tab on the suction cup to help remove it.
- Keep the suction cup clean for best performance.

HANGER HOOK:

- Attach the hook to a metal threaded area.
- Twist the hook into the threaded area until it is securely fastened.